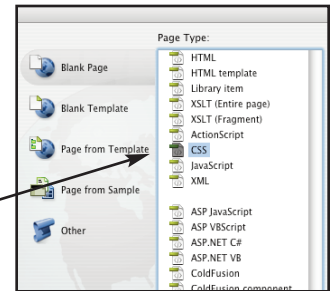


EX 4 (part 2)

Make 2 directories for EX 4. (one working, the other for site files) Site manage to the site files directory.

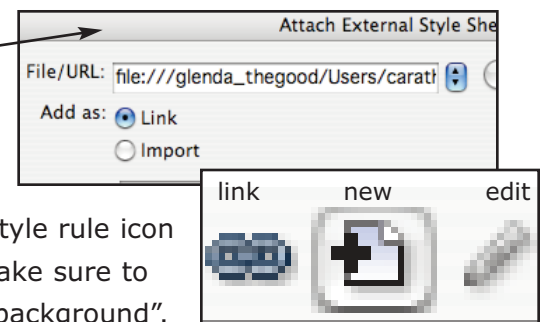
Create an image in PSP that is 800 pixels wide and 100 pixels tall. Do something colorful here, then crop that image so it is 800 pixels x 1 pixel tall (not a typo). Save this in the appropriate format in your site folder.

Go to DW and make sure you are working in the correct site. Make a new html page and name it index.html. Make a new css page and name it ex4.css.



Open the CSS panel as you did in part one. (window>css)

Using the CSS panel, link your CSS to your html. (use the link icon at the bottom of the panel). (Make sure you click on your html and THEN click the link button) .



First, we are going to set background properties. Chose the new style rule icon at the botton. Choose "class" and type "body" in the text input. Make sure to choose link. Ignore the warning. The CSS panel will open. Go to "background". Choose the 1px tall image you made as the background image and choose repeat. This will set the body background properties for any page which you attach to the CSS.

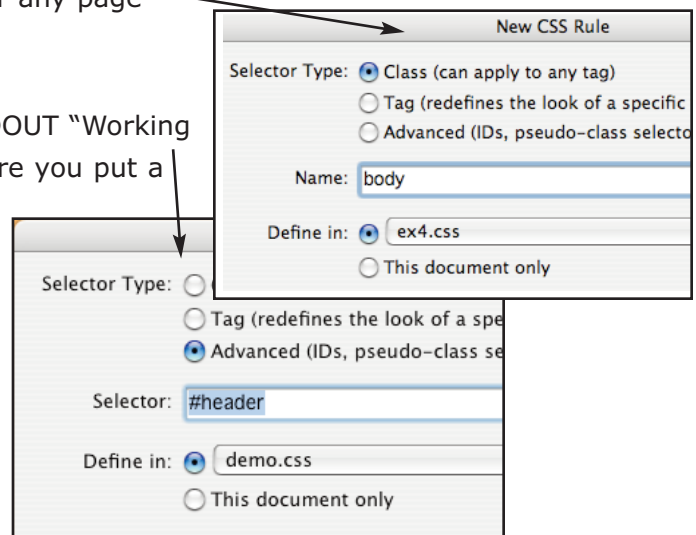
Now , we are going to create a div ID. (SEE THE HANDOUT "Working with CSS in Dreamweaver on how to do this!) Make sure you put a DIV ID in your html as well as setting properties in DW. You need these so that the html and CSS can "talk" to each other.

Insert a div id for some content. (#content)
Insert a div id for a header (#header)
Inser a div for an image (#image).

Change the settings so that each is placed absolutely on the page. Content and header should have a background color and text properties. Image should have a border and should contain an image (not a background image).

Set the z index so that header is in back, content is in the middle and image is in front. (z index of 0= back. 1 is in front of that, 2 is in front of 1, etc.

Change these around. Note the changes. Upload this and share the URL alias to Nick



Have a nice day